

***NomiStar Inc***

102 W. Commercial Ave.  
Moonachie, NJ 07074  
Phone: 973-424-0909/877-424-0909  
Fax: 973-424-9090/800-854-0296  
Email: [info.nj@nomistar.net](mailto:info.nj@nomistar.net)



***NomiStar Inc***

1043 N Lombard Rd  
Lombard, IL 60148  
Phone: 630-261-9300/877-261-9333  
Fax: 630-261-0061/866-633-7755  
Email: [info.il@nomistar.net](mailto:info.il@nomistar.net)

Effective January 28, 2022

# NomiStar Roller Shades



**NomiStar Inc**

102 W. Commercial Ave.  
 Moonachie, NJ 07074  
 Phone: 973-424-0909/877-424-0909  
 Fax: 973-424-9090/800-854-0296  
 Email: [info.nj@nomistar.net](mailto:info.nj@nomistar.net)

**NomiStar Inc**

1043 N Lombard Rd  
 Lombard, IL 60148  
 Phone: 630-261-9300/877-261-9333  
 Fax: 630-261-0061/866-633-7755  
 Email: [info.il@nomistar.net](mailto:info.il@nomistar.net)

## NomiStar Roller Shades

ROLLER SHADE FABRIC		CHART	MAX WIDTH
			INCHES
Alkenz	3000 HT 3% 5%	Chart 2	98"
Alkenz	3000 Net 1%	Chart 3	78", 98", 118"
Alkenz	3000 Net 3%, 5%, 10%	Chart 2	78", 98", 118"
Alkenz	3000 Net Privacy <-1%	Chart 3	78", 98", 118"
Alkenz	3000 RR 3%	Chart 3	98"
Alkenz	4000 L 5%	Chart 3	98"
Alkenz	4000 Net 3% 5%	Chart 2	78", 98", 118"
Alkenz	4700 P 1%	Chart 3	98"
Alkenz	4700 Q 1%	Chart 3	98"
Alkenz	Ambient 5%	Quote Only *	118"
Alkenz	Enviro Screen 2%	Quote Only *	94"
Alkenz	Mesa BO	Chart 3	98", 118"
Alkenz	Omnia Screen 3%	Quote Only *	94"
Alkenz	Silver Screen 2% 4%	Quote Only *	94"
Alkenz	Tempe BO	Chart 2	98", 118"
Alkenz	View R 15%	Chart 2	98"
Alkenz	Vista BO	Chart 5	110"
	Boucle	Chart 1	72"
	Matte	Chart 1	54", 72", 77", 98", 120"
	Moire	Chart 1	72"
Phifer	Basic 3% 5%	Chart 4	98"
Phifer	Infinity 2 1% 3% 5%	Quote Only *	63", 98"
Phifer	SW 1000 25%	Chart 3	72", 84", 96"
Phifer	SW 2000 5%	Chart 4	63", 98", 126"
Phifer	SW 2100 10%	Chart 4	63", 98"
Phifer	SW 2360 10%	Chart 4	63", 98"
Phifer	SW 2390 5%	Chart 4	63", 98", 126"
Phifer	SW 2390 Performance + 5%	Quote Only *	63", 96"
Phifer	SW 2410 3%	Chart 4	63", 98", 126"
Phifer	SW 2410 Performance + 3%	Quote Only *	63", 98"
Phifer	SW 2500 1%	Chart 5	63", 98", 126"
Phifer	SW 2500 Performance + 1%	Quote Only *	63", 98"

\*Quote Only - will be assessed by per quote basis \*

\*\* Must have External Hembar \*\*

**NomiStar Inc**

102 W. Commercial Ave.  
 Moonachie, NJ 07074  
 Phone: 973-424-0909/877-424-0909  
 Fax: 973-424-9090/800-854-0296  
 Email: [info.nj@nomistar.net](mailto:info.nj@nomistar.net)

**NomiStar Inc**

1043 N Lombard Rd  
 Lombard, IL 60148  
 Phone: 630-261-9300/877-261-9333  
 Fax: 630-261-0061/866-633-7755  
 Email: [info.il@nomistar.net](mailto:info.il@nomistar.net)

## NomiStar Roller Shades

ROLLER SHADE FABRIC		CHART	MAX WIDTH
			INCHES
Phifer	SW 2701 1%	Chart 5	63", 98", 126"
Phifer	SW 2703 3%	Chart 4	63", 98", 126"
Phifer	SW 2705 5%	Chart 4	63", 98", 126"
Phifer	SW 2710 10%	Chart 4	63", 98"
Phifer	SW 3000 14%	Chart 3	72", 96"
Phifer	SW 4000 5%	Chart 4	63", 98", 126"
Phifer	SW 4100 10%	Chart 4	63", 84", 98"
Phifer	SW 4400 3%	Chart 5	63", 98", 126"
Phifer	SW 4500 5%	Chart 5	63", 98"
Phifer	SW 4550 5%	Chart 5	63", 98"
Phifer	SW 4600 3%	Chart 6	63", 98"
Phifer	SW 4650 3%	Chart 6	63", 98"
Phifer	SW 4800 1%	Chart 7	63", 96", 126"
Phifer	SW 4901 1%	Chart 7	63", 98"
Phifer	SW 4903 1%	Chart 7	63", 98"
Phifer	SW 5000	Chart 7	74", 98"
Phifer	SW 7000 BO	Chart 8	94", 118"
Phifer	SW 7100 BO	Chart 8	72", 96"
Vertilux	Amalfi	** Chart 6 **	108"
Vertilux	Bamboo	** Chart 7 **	98"
Vertilux	Bamboo Bright	** Chart 9 **	78"
Vertilux	Bryson 11%	Chart 7	98"
Vertilux	Carolina	** Chart 8 **	98"
Vertilux	Claire	** Chart 8 **	106"
Vertilux	Daku BO	** Chart 8 **	104"
Vertilux	Dakar	Chart 9	110"
Vertilux	Ibiza	** Chart 7 **	98"
Vertilux	Imagine BO FR Sanitized	** Chart 8 **	104"
Vertilux	Linen	** Chart 6 **	106"
Vertilux	Mistral	** Chart 6 **	106"
Vertilux	Noche BO FR	Chart 4	72"

\*Quote Only - will be assessed by per quote basis \*

\*\* Must have External Hembar \*\*

**NomiStar Inc**

102 W. Commercial Ave.  
 Moonachie, NJ 07074  
 Phone: 973-424-0909/877-424-0909  
 Fax: 973-424-9090/800-854-0296  
 Email: [info.nj@nomistar.net](mailto:info.nj@nomistar.net)

**NomiStar Inc**

1043 N Lombard Rd  
 Lombard, IL 60148  
 Phone: 630-261-9300/877-261-9333  
 Fax: 630-261-0061/866-633-7755  
 Email: [info.il@nomistar.net](mailto:info.il@nomistar.net)

## NomiStar Roller Shades

ROLLER SHADE FABRIC		CHART	MAX WIDTH
			INCHES
Vertilux	Rome	** Chart 6 **	106"
Vertilux	Samoa BO	** Chart 8 **	98"
Vertilux	Shantung	** Chart 6 **	98"
Vertilux	Silk Romance	** Chart 9 **	98"
Vertilux	Singular 2800 BO	Chart 4	110"
Vertilux	South Beach	** Chart 4 **	98"
Vertilux	South Beach BO	Chart 2	118"
Vertilux	South Beach BO Duplex	Chart 4	98"
Vertilux	Stucco BO	** Chart 7 **	110"
Vertilux	Sunset BO	Chart 3	98", 118"
Vertilux	Touareg	** Chart 9 **	98"
Vertilux	VTX Screen 3500 0.5%	Chart 7	98", 118"
Vertilux	VTX Screen 3000 1%	Chart 3	98", 118"
Vertilux	VTX Screen 3000 3%, 5%, 10%	Chart 2	98", 118"
Vertilux	VTX Screen 3000 BO	Chart 6	98", 118"
Vertilux	VTX Screen 320 20%	Chart 2	98"
Vertilux	VTX Screen 4000 5%	Chart 2	98"
Vertilux	VTX Screen 5000 1%	Chart 3	98"
Vertilux	VTX Screen 8200 3%	Chart 3	98", 118"

\*Quote Only - will be assessed by per quote basis \*

\*\* Must have External Hembar \*\*

**NomiStar Inc**

102 W. Commercial Ave.  
 Moonachie, NJ 07074  
 Phone: 973-424-0909/877-424-0909  
 Fax: 973-424-9090/800-854-0296  
 Email: [info.nj@nomistar.net](mailto:info.nj@nomistar.net)



**NomiStar Inc**

1043 N Lombard Rd  
 Lombard, IL 60148  
 Phone: 630-261-9300/877-261-9333  
 Fax: 630-261-0061/866-633-7755  
 Email: [info.il@nomistar.net](mailto:info.il@nomistar.net)

**Roller Shades**

**Chart 1**

		Width														Side Channel (Pair)
		24	36	48	54	66	72	78	84	90	96	108	120	132	144	
Length	36	107	129	150	160	183	196	220	270	283	296	321	347	628	676	116
	48	117	142	166	182	212	228	254	307	321	337	367	393	673	720	154
	60	126	155	189	207	241	259	286	342	360	374	402	428	712	762	202
	72	135	170	209	230	270	290	319	372	387	403	433	464	751	803	251
	84	146	189	231	255	298	315	342	398	415	432	465	499	789	846	284
	96	156	205	254	280	319	337	367	424	443	462	498	534	828	889	319
	108	169	222	276	299	339	360	391	450	469	491	530	571	867	931	361
	120	182	241	295	316	361	384	416	476	498	520	564	606	906	974	403
	132	194	257	311	334	382	406	439	502	525	550	595	642	945	1015	444
	144	207	274	328	352	403	428	464	528	553	579	628	679	983	1057	480
	156	260	329	384	411	464	491	529	594	620	647	701	753	1062	1139	525
	168	272	342	400	429	485	514	553	619	649	676	733	789	1101	1182	575
	180	285	355	416	446	506	537	577	645	675	706	764	824	1140	1223	606
	192	298	368	432	464	527	559	602	671	703	735	798	861	1179	1265	637

**Chart 2**

		Width														Side Channel (Pair)
		24	36	48	54	66	72	78	84	90	96	108	120	132	144	
Length	36	135	163	191	204	233	250	281	335	363	369	402	434	644	686	116
	48	148	179	213	233	272	291	325	384	404	423	462	495	703	745	154
	60	161	198	242	265	309	334	369	430	447	472	508	542	754	801	202
	72	173	218	270	296	348	374	412	469	488	511	550	590	806	857	251
	84	187	242	299	329	385	408	443	504	521	549	593	637	857	913	284
	96	202	265	329	361	413	437	476	538	550	588	636	684	909	969	319
	108	217	287	358	387	441	468	508	573	581	627	679	732	959	1024	361
	120	234	311	382	411	469	498	541	607	611	666	723	779	1011	1080	403
	132	250	334	404	434	497	528	572	642	650	705	764	826	1063	1136	444
	144	268	356	425	459	524	558	605	676	690	742	807	874	1114	1192	480
	156	338	429	499	536	606	641	690	763	793	833	905	974	1218	1300	525
	168	354	446	523	559	633	671	722	797	839	872	946	1021	1270	1356	575
	180	371	464	543	582	662	701	754	831	865	911	989	1067	1322	1412	606
	192	389	481	564	607	689	732	787	866	911	949	1032	1115	1374	1468	637

**NomiStar Inc**

102 W. Commercial Ave.  
 Moonachie, NJ 07074  
 Phone: 973-424-0909/877-424-0909  
 Fax: 973-424-9090/800-854-0296  
 Email: [info.nj@nomistar.net](mailto:info.nj@nomistar.net)



**NomiStar Inc**

1043 N Lombard Rd  
 Lombard, IL 60148  
 Phone: 630-261-9300/877-261-9333  
 Fax: 630-261-0061/866-633-7755  
 Email: [info.il@nomistar.net](mailto:info.il@nomistar.net)

**Roller Shades  
 Chart 3**

		Width														Side Channel (Pair)
		24	36	48	54	66	72	78	84	90	96	108	120	132	144	
Length	36	151	186	222	239	277	298	332	390	411	432	472	512	727	779	116
	48	168	209	252	277	326	351	389	451	475	501	550	593	807	861	154
	60	185	233	289	317	374	404	446	512	541	566	614	660	881	940	202
	72	202	260	326	359	424	456	501	566	592	620	675	728	956	1021	251
	84	218	289	363	399	472	502	546	614	644	675	735	796	1028	1100	284
	96	237	317	399	441	511	543	592	662	694	729	796	862	1102	1180	319
	108	256	347	437	476	549	586	636	711	748	784	857	930	1175	1260	361
	120	277	376	469	508	588	628	681	759	800	839	918	997	1249	1339	403
	132	298	404	498	541	627	670	727	807	850	893	979	1063	1322	1420	444
	144	319	433	528	573	666	712	772	855	901	948	1040	1131	1394	1499	480
	156	391	511	610	659	757	806	868	956	1004	1056	1153	1251	1521	1630	525
	168	412	534	638	692	796	848	914	1005	1056	1110	1209	1317	1595	1711	575
	180	433	558	668	724	835	891	959	1053	1109	1165	1274	1385	1668	1790	606
	192	452	581	698	757	874	932	1005	1101	1160	1219	1335	1452	1742	1869	637

**Chart 4**

		Width														Side Channel (Pair)
		24	36	48	54	66	72	78	84	90	96	108	120	132	144	
Length	36	157	194	233	250	290	311	347	406	428	450	491	534	757	810	116
	48	176	218	264	290	341	367	407	471	495	521	573	619	841	897	154
	60	192	243	302	332	391	423	467	534	564	590	641	690	919	980	202
	72	211	272	342	376	443	477	524	590	618	647	705	761	997	1065	251
	84	229	302	380	417	494	525	572	641	672	705	767	832	1073	1148	284
	96	247	332	417	462	536	569	620	692	725	762	832	901	1151	1232	319
	108	268	364	458	498	575	614	666	744	781	819	896	972	1227	1316	361
	120	290	394	491	533	616	658	714	794	836	876	959	1043	1305	1399	403
	132	312	424	521	567	657	702	762	844	889	935	1024	1113	1382	1483	444
	144	334	454	553	601	698	746	810	894	943	992	1088	1184	1456	1567	480
	156	410	536	640	690	793	845	910	1000	1050	1105	1208	1309	1590	1704	525
	168	432	560	670	725	835	888	958	1052	1105	1162	1270	1379	1668	1789	575
	180	454	585	701	759	875	933	1006	1102	1161	1219	1334	1450	1745	1872	606
	192	475	610	732	793	917	978	1053	1153	1214	1277	1399	1521	1823	1955	637

**NomiStar Inc**

102 W. Commercial Ave.  
 Moonachie, NJ 07074  
 Phone: 973-424-0909/877-424-0909  
 Fax: 973-424-9090/800-854-0296  
 Email: [info.nj@nomistar.net](mailto:info.nj@nomistar.net)



**NomiStar Inc**

1043 N Lombard Rd  
 Lombard, IL 60148  
 Phone: 630-261-9300/877-261-9333  
 Fax: 630-261-0061/866-633-7755  
 Email: [info.il@nomistar.net](mailto:info.il@nomistar.net)

**Roller Shades**

**Chart 5**

		Width														Side Channel (Pair)
		24	36	48	54	66	72	78	84	90	96	108	120	132	144	
Length	36	166	211	252	274	320	345	384	446	472	497	585	621	816	876	116
	48	187	239	291	321	381	411	454	523	553	582	642	696	920	987	154
	60	208	270	337	372	442	477	525	598	633	666	724	784	1018	1089	202
	72	231	300	382	423	502	542	594	666	701	737	805	874	1114	1195	251
	84	251	338	428	472	560	599	654	731	767	806	883	959	1210	1299	284
	96	272	373	472	523	611	654	712	793	835	879	963	1048	1307	1405	319
	108	298	407	517	568	662	709	771	855	902	950	1043	1136	1403	1509	361
	120	326	443	558	610	712	763	829	919	970	1021	1123	1225	1500	1616	403
	132	348	478	597	651	763	818	889	982	1036	1092	1204	1314	1596	1717	444
	144	371	514	634	694	813	872	948	1045	1104	1164	1283	1401	1693	1824	480
	156	449	598	724	788	915	979	1058	1097	1225	1287	1416	1542	1841	1981	525
	168	469	623	763	829	966	1034	1117	1156	1291	1360	1494	1629	1938	2085	575
	180	498	657	801	872	1017	1088	1177	1216	1359	1431	1573	1719	2035	2189	606
192	523	686	839	914	1067	1143	1235	1274	1426	1503	1654	1807	2131	2295	637	

**Chart 6**

		Width														Side Channel (Pair)
		24	36	48	54	66	72	78	84	90	96	108	120	132	144	
Length	36	183	235	287	313	368	397	439	506	536	564	621	679	909	978	116
	48	208	270	334	369	439	475	524	597	632	667	737	802	1037	1110	154
	60	234	307	389	429	512	554	608	688	729	766	839	910	1157	1240	202
	72	259	347	442	489	584	632	690	770	811	854	937	1019	1277	1370	251
	84	285	389	495	549	654	702	762	848	894	943	1035	1128	1396	1500	284
	96	311	429	549	608	716	768	835	924	978	1030	1134	1238	1516	1632	319
	108	339	471	603	663	779	836	907	1002	1061	1118	1232	1347	1625	1762	361
	120	368	512	651	715	840	904	979	1080	1143	1206	1331	1456	1755	1892	403
	132	397	554	698	766	902	970	1052	1158	1226	1295	1430	1565	1875	2022	444
	144	426	595	745	818	965	1037	1125	1235	1309	1383	1529	1674	1994	2152	480
	156	507	685	842	922	1078	1157	1249	1365	1444	1522	1680	1836	2166	2334	525
	168	536	722	889	972	1140	1223	1321	1443	1528	1611	1777	1945	2285	2464	575
	180	566	757	935	1024	1203	1291	1394	1521	1609	1699	1876	2054	2405	2594	606
192	594	793	982	1075	1264	1359	1466	1598	1693	1788	1975	2163	2525	2724	637	



**NomiStar Inc**

102 W. Commercial Ave.  
 Moonachie, NJ 07074  
 Phone: 973-424-0909/877-424-0909  
 Fax: 973-424-9090/800-854-0296  
 Email: [info.nj@nomistar.net](mailto:info.nj@nomistar.net)



**NomiStar Inc**

1043 N Lombard Rd  
 Lombard, IL 60148  
 Phone: 630-261-9300/877-261-9333  
 Fax: 630-261-0061/866-633-7755  
 Email: [info.il@nomistar.net](mailto:info.il@nomistar.net)

**Roller Shades  
 Chart 7**

		Width														Side Channel (Pair)
		24	36	48	54	66	72	78	84	90	96	108	120	132	144	
Length	36	200	260	321	354	413	447	494	564	598	632	697	762	1001	1079	116
	48	229	303	377	420	498	538	592	670	711	751	831	906	1152	1236	154
	60	259	345	438	489	581	629	690	775	823	866	952	1036	1295	1391	202
	72	289	391	501	558	664	719	785	872	922	971	1069	1166	1438	1547	251
	84	317	438	563	627	746	802	871	965	1021	1076	1186	1296	1581	1702	284
	96	348	486	624	697	820	881	957	1057	1119	1180	1304	1426	1723	1858	319
	108	381	534	686	761	893	962	1043	1149	1218	1286	1421	1556	1866	2012	361
	120	415	581	744	820	967	1041	1130	1242	1316	1391	1539	1686	2009	2167	403
	132	447	629	798	881	1040	1121	1216	1334	1414	1495	1656	1816	2150	2323	444
	144	481	676	853	943	1114	1201	1301	1426	1513	1600	1773	1946	2293	2478	480
	156	566	744	959	1056	1239	1333	1439	1570	1664	1758	1944	2128	2488	2685	525
	168	599	815	1014	1117	1313	1412	1525	1663	1763	1863	2061	2258	2630	2841	575
	180	632	858	1069	1178	1386	1492	1612	1755	1862	1967	2178	2388	2773	2995	606
	192	666	900	1123	1239	1460	1572	1698	1847	1960	2072	2296	2518	2196	3150	637

**Chart 8**

		Width														Side Channel (Pair)
		24	36	48	54	66	72	78	84	90	96	108	120	132	144	
Length	36	233	311	389	426	506	547	602	683	724	766	848	930	1186	1279	116
	48	270	365	460	511	612	663	728	816	867	919	1019	1115	1383	1487	154
	60	309	420	540	599	719	780	853	952	1011	1067	1178	1287	1572	1693	202
	72	347	478	618	688	826	897	975	1078	1141	1205	1333	1460	1760	1898	251
	84	385	540	697	775	931	1004	1089	1199	1271	1344	1487	1632	1949	2103	284
	96	424	599	775	862	1027	1108	1203	1321	1401	1482	1643	1803	2137	2310	319
	108	465	659	854	946	1125	1213	1316	1443	1531	1621	1798	1975	2326	2516	361
	120	506	720	928	1026	1221	1318	1429	1564	1661	1759	1954	2148	2516	2721	403
	132	547	780	1000	1105	1317	1422	1542	1686	1791	1898	2109	2319	2704	2926	444
	144	589	840	1071	1186	1413	1528	1655	1807	1921	2036	1912	2491	2893	3132	480
	156	683	949	1195	1317	1563	1685	1820	1981	2103	2227	2471	2714	3133	3389	525
	168	724	1004	1266	1396	1659	1789	1934	2102	2233	2365	2626	2887	3322	3595	575
	180	766	1058	1338	1477	1755	1894	2048	2224	2363	2504	2781	3059	3510	3800	606
	192	807	1113	1409	1556	1851	1999	2161	2347	2493	2642	2937	3231	3699	4005	637



**NomiStar Inc**

102 W. Commercial Ave.  
 Moonachie, NJ 07074  
 Phone: 973-424-0909/877-424-0909  
 Fax: 973-424-9090/800-854-0296  
 Email: [info.nj@nomistar.net](mailto:info.nj@nomistar.net)



**NomiStar Inc**

1043 N Lombard Rd  
 Lombard, IL 60148  
 Phone: 630-261-9300/877-261-9333  
 Fax: 630-261-0061/866-633-7755  
 Email: [info.il@nomistar.net](mailto:info.il@nomistar.net)

**Chart 9**

		Width														Side Channel (Pair)
		24	36	48	54	66	72	78	84	90	96	108	120	132	144	
Length	36	268	357	447	490	582	629	692	785	883	881	975	1069	1363	1471	116
	48	311	420	529	588	704	762	837	939	997	1057	1172	1283	1591	1710	154
	60	356	483	620	689	827	897	981	1094	1163	1227	1354	1480	1807	1946	202
	72	399	550	710	791	949	1032	1121	1239	1313	1386	1532	1679	2024	2183	251
	84	443	620	801	891	1070	1154	1253	1378	1462	1546	1710	1876	2241	2419	284
	96	487	689	891	993	1181	1274	1383	1519	1612	1704	1890	2074	2458	2657	319
	108	535	758	982	1088	1293	1395	1513	1659	1761	1864	2068	2271	2675	2893	361
	120	582	828	1067	1180	1404	1516	1643	1798	1911	2023	2247	2470	2893	3129	403
	132	629	897	1150	1271	1514	1636	1773	1939	2060	2183	2425	2667	3110	3365	444
	144	677	966	1232	1363	1625	1757	1903	2078	2210	2341	2199	2864	3326	3601	480
	156	785	1091	1374	1514	1797	1938	2093	2278	2419	2561	2842	3122	3603	3897	525
	168	833	1154	1456	1606	1908	2057	2225	2417	2568	2719	3020	3320	3820	4134	575
	180	881	1217	1538	1698	2018	2178	2355	2558	2718	2879	3198	3518	4037	4370	606
	192	928	1280	1621	1790	2129	2299	2485	2698	2867	3038	3377	3715	4253	4606	637

**NomiStar Inc**

102 W. Commercial Ave.  
 Moonachie, NJ 07074  
 Phone: 973-424-0909/877-424-0909  
 Fax: 973-424-9090/800-854-0296  
 Email: [info.nj@nomistar.net](mailto:info.nj@nomistar.net)



**NomiStar Inc**

1043 N Lombard Rd  
 Lombard, IL 60148  
 Phone: 630-261-9300/877-261-9333  
 Fax: 630-261-0061/866-633-7755  
 Email: [info.il@nomistar.net](mailto:info.il@nomistar.net)

**Roller Shade – Valance Options**

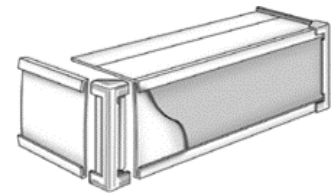
	Width														
	24	36	48	54	60	66	72	78	84	90	96	108	120	132	144
<b>Cassette 100</b>	129	167	183	199	217	221	242	259	280	297	312	351	388	427	461
<b>Cassette 120</b>	141	185	204	221	241	246	269	287	311	329	347	391	431	475	512
<b>Fascia 3"</b>	61	79	95	108	115	121	136	141	150	156	167	190	206	224	242
<b>Fascia 4"</b>	69	90	104	121	128	132	155	168	177	187	201	227	236	259	276
<b>Fascia 5"</b>	137	177	199	213	225	235	247	260	270	283	296	343	365	397	429
<b>Standard Valance</b>	30	35	41	47	47	56	56	57	59	66	66	74	79	85	89



**Fascia**  
 Available in 3", 4", 5"  
 Regular Roll Only  
 No Fabric Insert



**Cassette**  
 Available in 3", 4"  
 Regular Roll Only  
 Fabric Insert



**Standard Valance**  
 Reverse & Regular Roll  
 3.5" Fabric Insert

**Color Options**

\*Clutches are available in the following colors:

**White (Default Color)**  
 Black, Grey, Brown and Ivory  
**(Color must be specified)**

\*Cassettes and Fascias are available in the following colors:

Black, Bronze, Ivory, Silver, White  
**(All Colors must be specified)**  
 Please notify us at the time of order or quote.

**NomiStar Inc**

102 W. Commercial Ave.  
 Moonachie, NJ 07074  
 Phone: 973-424-0909/877-424-0909  
 Fax: 973-424-9090/800-854-0296  
 Email: [info.nj@nomistar.net](mailto:info.nj@nomistar.net)



**NomiStar Inc**

1043 N Lombard Rd  
 Lombard, IL 60148  
 Phone: 630-261-9300/877-261-9333  
 Fax: 630-261-0061/866-633-7755  
 Email: [info.il@nomistar.net](mailto:info.il@nomistar.net)

**Sill Channel**

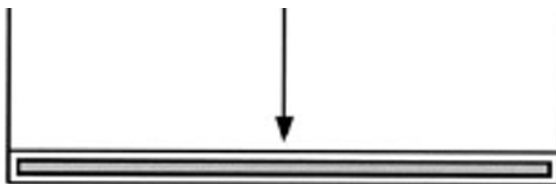
	Width														
	24	36	48	54	60	66	72	78	84	90	96	108	120	132	144
<b>Sill Channel</b>	45	59	77	91	101	113	126	136	143	154	160	181	202	223	241

Side and Sill Channels are used to eliminate light gaps between the roller shade fabric and window frame.

For Side Channels please refer to the charts on the previous pages.

Side and Sill Channels are available in White or Ivory Only

**Hembar Options**



Standard Pocket

Wood or Aluminum Hembar is heat sealed inside the pocket

Sealed at ends only if specified.



External Hembar

Available in:

Black, Bronze, Ivory, Silver, White  
**(Color must be specified)**

	Width														
	24	36	48	54	60	66	72	78	84	90	96	108	120	132	144
<b>External Hembar</b>	42	55	73	82	91	100	109	118	127	137	146	164	182	200	218